



Lime Grove, Southmoor

Guide Price £295,000

OXHOME

8 Lime Grove

Southmoor, Abingdon, OX13 5DN

8 Lime Grove is a well-designed Terraced House Competitively Priced with No Onward Chain for Early Completion. Features include Double Glazing ,Gas Central Heating, Living Room & Modern Kitchen with Appliances.

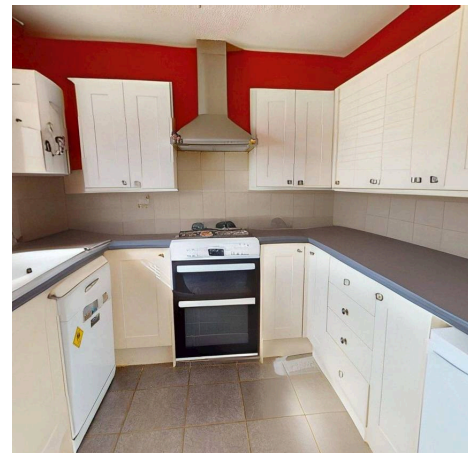
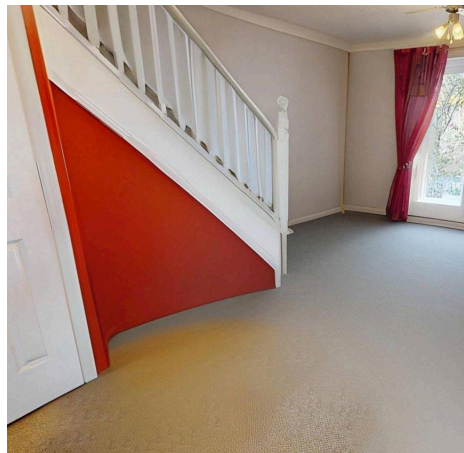
On First Floor there are 2 bedrooms both Double & Bathroom. Outside is open plan to Front with a well-stocked Private Garden to Rear. A Garage is in the Adjacent Block with Parking.

Constructed to a good Traditional Standard in 1990 by Trencherwood Homes, Lime Grove is set in this small & popular Development. Southmoor is an attractive Village with a range of Local Shops including 2 Coops, a One Stop together with thriving Community Hall & Tennis Courts.

Public Transport includes a regular Bus service to Oxford & Swindon whilst the A420 offers good Commuting together with A415. Mainline Railways are at Didcot (12 miles) & Oxford (14 miles).

This Attractive Home will appeal to a Wide Range of Buyers including First Time, Families & Investors.

PLEASE NOTE: The Property images have been AI-enhanced to digitally remove furniture and present the space as unfurnished. The purpose is to give a clearer view of the room's layout and dimensions. The property is currently occupied.





FEATURES:

- No Onward Chain for early Completion
- 2 x Double Bedrooms
- Garage with Parking
- Gas Central Heating & Double Glazing
- Private Rear Garden
- Cul de sac Location
- Living Room
- Modern Kitchen
- Bathroom

KEY INFORMATION:

Council Tax band: C

Tenure: Freehold

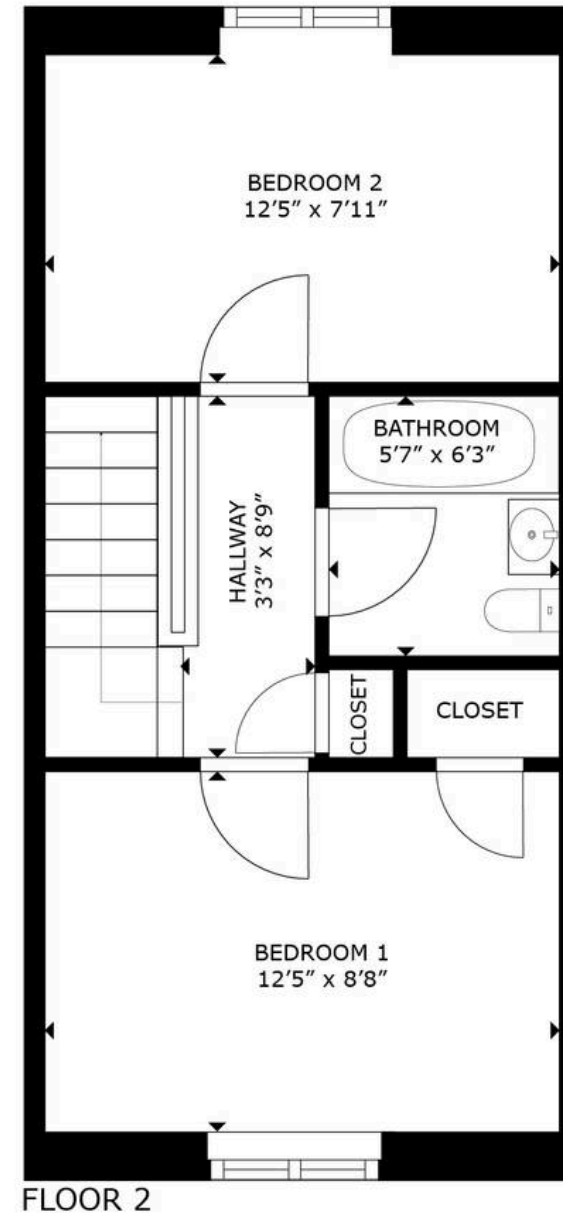
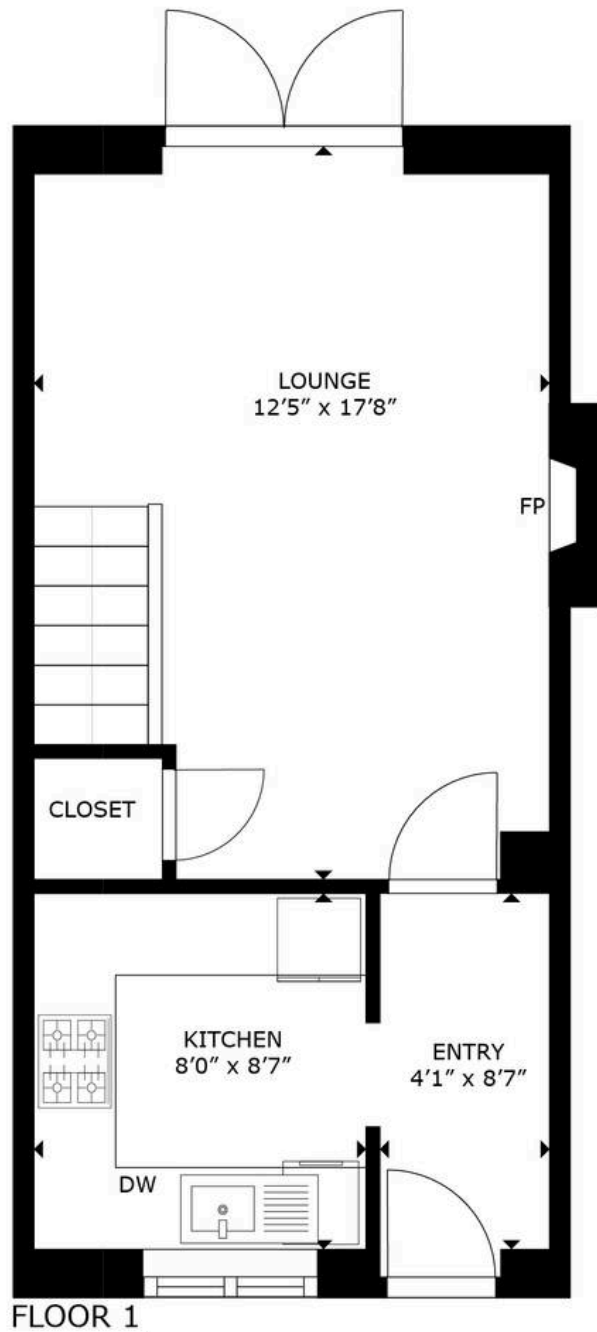
EPC Energy Efficiency Rating: C

EPC Environmental Impact Rating: C

DIRECTIONS FROM OUR OFFICES:

From our offices follow Bath Street east, then turn right onto Albert Park Road. Continue to the A415 and head west towards Marcham. After passing through Marcham, continue straight onto the A415/A420 dual carriageway. Follow signs for Kingston Bagpuize / Southmoor, turning off at the Southmoor exit. Once in Southmoor, turn onto Lime Grove.





GROSS INTERNAL AREA
 FLOOR 1: 334 sq. ft, FLOOR 2: 325 sq. ft
 TOTAL: 659 sq. ft

SIZES AND DIMENSIONS ARE APPROXIMATE, ACTUAL MAY VARY.