



Reade Avenue, Abingdon

Guide Price £185,000



OXHOME

17 Reade Avenue

Abingdon, OX14 3YE

CHAIN FREE Spacious One-Bedroom Maisonette with Long Lease & Parking- Ideal for First-Time Buyers or Investors.

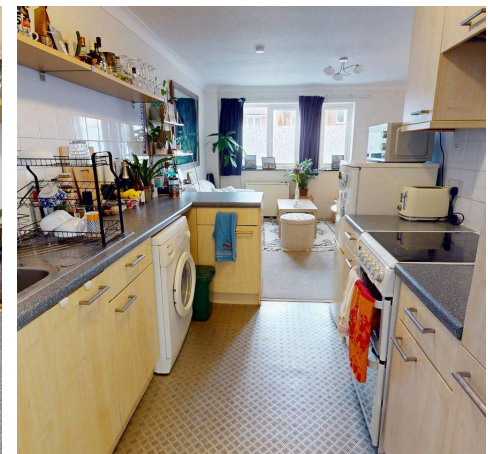
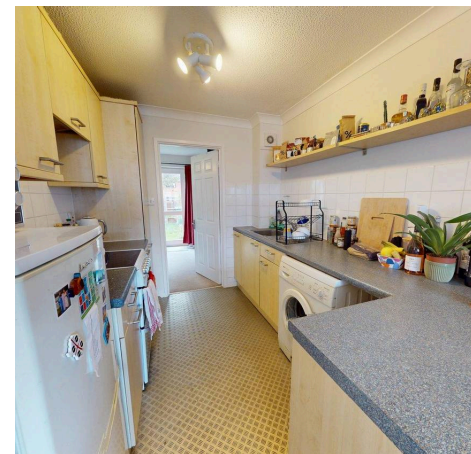
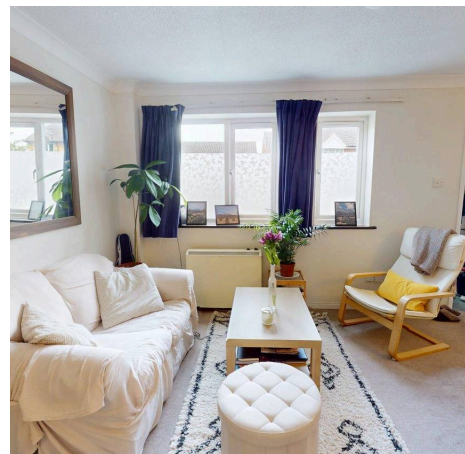
We are delighted to offer for sale this well-maintained and generously sized one-bedroom ground floor maisonette, situated within a quiet mid-terraced block in a desirable residential area. Offering bright and comfortable accommodation with allocated parking, this property presents an excellent opportunity for first-time buyers, investors, or those seeking a low-maintenance home in a well-connected location.

The property is offered furnished, with Kitchen appliances, and ready to move into. The accommodation is well-proportioned, with a bright spacious layout and neutral décor that offers a blank canvas for personalisation.

Outside, there is a low maintenance Private Rear Garden and Allocated Parking Space for convenience.

Located close to local amenities, green spaces, and excellent transport links, this maisonette combines peace and privacy with easy access to surrounding areas.

Viewings highly recommended by Sole Agents.





Key Features:

- No Ground Rent or Service Charges
- End of Chain with Early Possession
- Long lease: 189 years from 25th December 1984
- Quiet, convenient location with good transport links
- Private rear garden & allocated parking space
- Spacious living room, kitchen, double bedroom and bathroom
- Electric storage heating
- Double glazed windows throughout
- Available furnished with washing machine, fridge-freezer and washing machine
- Council Tax Band: B, EPC Rating: C

Accommodation:

Entrance Porch: 3' 8" x 3' 8"

Living Room: 11' 8" x 14' 5"

Kitchen: 7' 11" x 7' 6"

Bedroom: 9' 2" x 14' 5"

Bathroom: 7' 11" x 14' 5"



Directions from our Offices:

Head south and merge onto Ock Street (A415). At the traffic lights turn right onto Stratton Way (A415) and continue onto Vineyard (A4183). At the first roundabout, take the second exit onto Radley Road, then at the next roundabout, take the second exit again onto Audlett Drive. After approximately 0.6 miles, turn left into Reade Avenue, where the property will be on your right.

