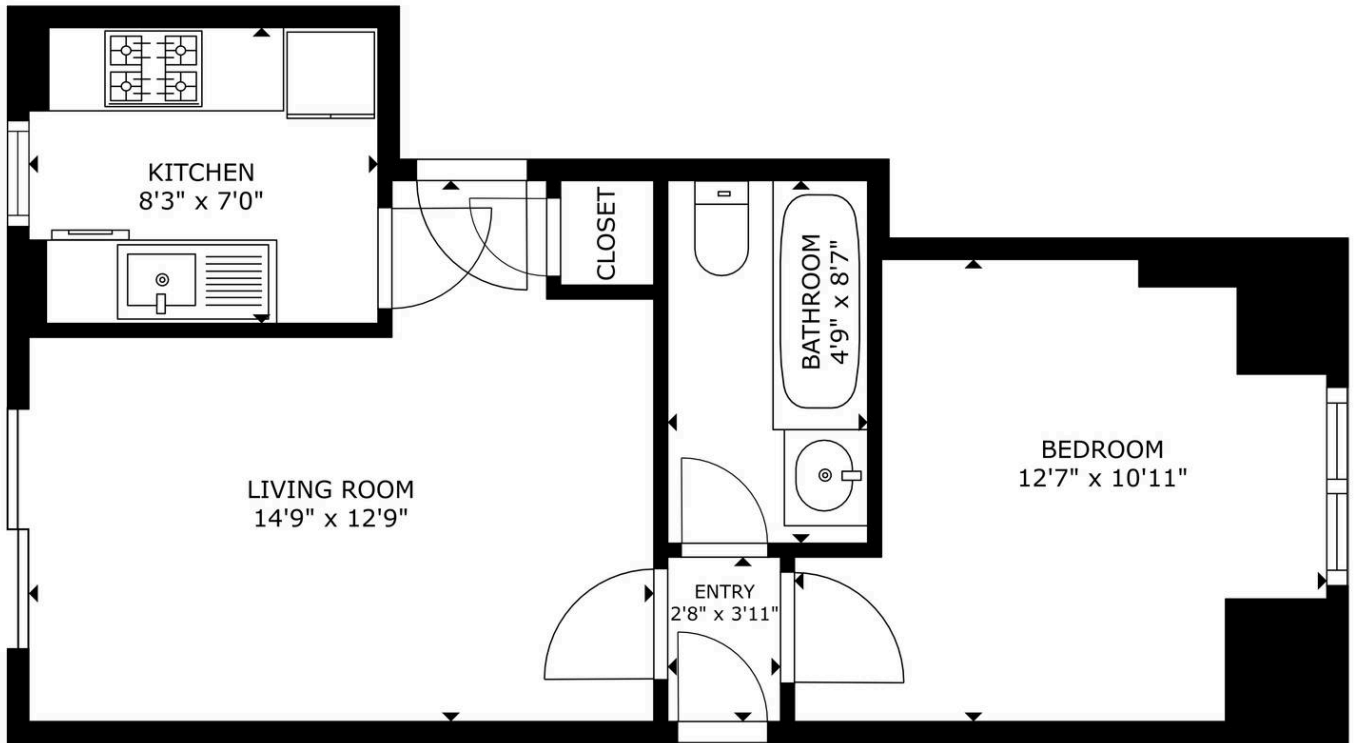




21a Midwinter Avenue, Milton

£169,500 Leasehold

Chain Free • No Ground Rent • 999 Year Lease from 24th June 1991 • Ground Floor Flat • Gas Central Heating • Communal Garden • Convenient for Didcot, Milton Park and A34 • Residents Parking • EPC Rating C



FLOOR PLAN

OXHOME

GROSS INTERNAL AREA
FLOOR PLAN: 402 sq. ft
SIZES AND DIMENSIONS ARE APPROXIMATE, ACTUAL MAY VARY.

