



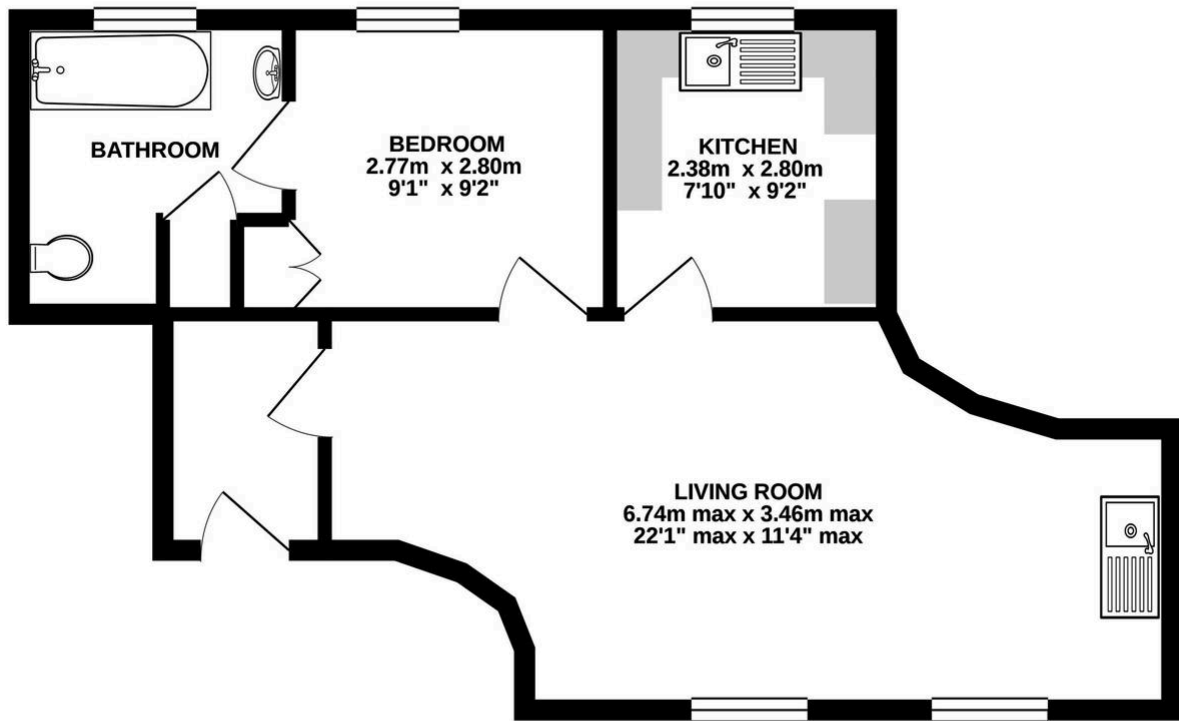
## 9 St. Helens Mill St. Helens Wharf, Abingdon

£1,100 pcm

- Well appointed ground floor flat in tasteful conversion of historic mill
- Within walking distance of Abingdon Town Centre
- Gas Central Heating
- Lounge/Diner
- Kitchen with appliances
- Double Bedroom with built-in wardrobe
- En-suite Bathroom
- Allocated Parking
- Communal Gardens
- Council Tax Band B



## GROUND FLOOR



**TOTAL FLOOR AREA : 43.0 sq.m. (463 sq.ft.) approx.**

Whilst every attempt has been made to ensure the accuracy of the floorplan contained here, measurements of doors, windows, rooms and any other items are approximate and no responsibility is taken for any error, omission or mis-statement. This plan is for illustrative purposes only and should be used as such by any prospective purchaser. The services, systems and appliances shown have not been tested and no guarantee as to their operability or efficiency can be given.

Made with Metropix ©2021

